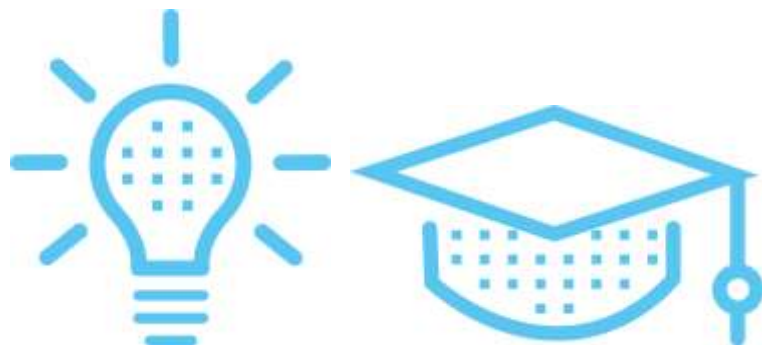




WELCOME TO THE CUEF! 2nd SEMESTER 2023-2024

January 19th to May 31st
See course calendar

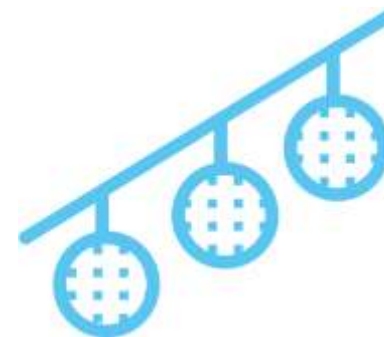
CUEF Reception office (H014)
Opening hours
Monday to Thursday,
8:15am to 12:45 - 2 to 5:15pm
Friday, 8:15am to 12:45 - 2 to 4pm



ACCESS YOUR TIME SCHEDULES MAKE SURE YOU RECEIVED YOUR LOGIN

To access your time schedules for the coming weeks, starting on the 1st day of course, have your Internet **login and password** ready (received by email) and go to:

- <https://leo.univ-grenoble-alpes.fr/>
- Click on « Mon emploi du temps »
- CUEF - COURS DE FRANÇAIS
- Click on the arrows « Etudiants » - « Campus Grenoble » - « CUEF » - « Cours de français au quotidien »
- Click on the arrow corresponding to the level of your group
- Click on your group
- Check the time schedule of your course (week by week)



WELCOME TO THE CUEF OF GRENOBLE

2nd semester 2023- 2024

COMPULSORY WELCOME MEETING

Room F003
(ground floor - Stendhal building F)
9:15am: presentations of the CUEF
course and activity program

COURSE PAYMENT deadline January 19th

620 euros
Office H014

STUDENT CARD

Office H014

CLASSES START

Friday January 19th
9:30am

LOGIN AND PASSWORD

To use on the Intranet,
in the Internet room
and for the campus Wifi
Received by email. If you have not
received the link, please let us know

TIME SCHEDULE UGA EMAIL BOX

<https://leo.univ-grenoble-alpes.fr/>

CULTURAL ACTIVITIES

Come to the **Foyer du CUEF** for
information and advice on things to do
during your stay.
(H001 - in front of the cafeteria)

And don't forget to like our



RESOURCE CENTRES

CUEF learner library (BULLES)
ground floor build. C
Internet room: wing B, Michel Dubois
building



COPIES AND PRINTING

On line on LEO - Mes ressources -
reprographie, impression or
at the reprography department
Building DLST
Tram stop B or C « Gabriel Fauré »

NEW AND SECOND HAND BOOKS

Bookstores Arthaud and Decitre,
Grande rue
Bookstore Gibert, Boulevard Gambetta
Grenoble

WHERE TO EAT

Stendhal Cafeteria
Café Littéraire
Diderot restaurant
*Download the Izly app or get your Izly
card (3,30€) at the Diderot restaurant
upon presentation of your CUEF student
card*

IF YOU NEED ANY HELP

on health, psychological
or social areas,
please make an appointment with
the campus health center

MUSE - 80 Allée Ampère
Saint-Martin-d'Hères
Tram stop (B et C) Gabriel Fauré - MUSE
<https://centre-sante.univ-grenoble-alpes.fr/>

ENJOY YOUR STAY AT THE CUEF!

