



CUEF
de Grenoble

Vivre le français
au cœur des Alpes

WELCOME TO THE CUEF! 2nd SEMESTER 2022-2023

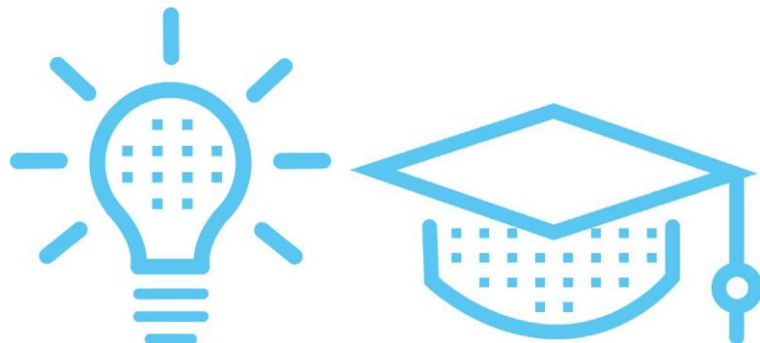
January 13th to May 26th
See calendar

CUEF Reception office (H014)
Opening hours

Monday to Thursday,

8:15am to 12:45 - 2 to 5:15pm

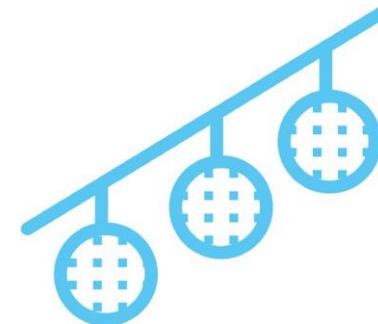
Friday, 8:15am to 12:45 - 2 to 4pm



ACCESS YOUR TIME SCHEDULES MAKE SURE YOU RECEIVED YOUR LOGIN

To access your time schedules for the coming weeks, starting on the 1st day of course, have your Internet **login and password** ready (received by email) and go to:

- <https://leo.univ-grenoble-alpes.fr/>
- Click on « Mon emploi du temps »
- CUEF - COURS DE FRANÇAIS
- Click on the arrows "Etudiants" - « Campus Grenoble » - « CUEF » - « Cours semestriels »
- Click on the arrow corresponding to your type of course (ie.: "cours français du quotidien")
- Click on the arrow corresponding to your group
- Click on your group
- Check the time schedule of your course (week by week)



**WELCOME TO THE CUEF
OF GRENOBLE****2nd semester 2022- 2023****WELCOME MEETING
9:15am - room F003**

CUEF and course presentation

**COURSE PAYMENT
deadline January 20th**

620 euros

Office H014

STUDENT CARD

Office H014

CLASSES STARTFriday January 13th
9:30am**LOGIN AND PASSWORD**

To use on the Intranet,
in the K Internet room
and for the campus Wifi
Received by email. If you have not
received the link, please let us know

**TIME SCHEDULE
UGA EMAIL BOX**<https://leo.univ-grenoble-alpes.fr/>**CULTURAL ACTIVITIES**

Come to the **Foyer du CUEF** for
information and advice on things to do
during your stay.
(H001 - in front of the cafeteria)

And don't forget to like our **RESOURCE CENTRES**

CUEF learner library (BULLES)
ground floor build. C
Internet room: ground floor build. K

**COPIES AND PRINTING**

Buy a card
at the reprography department
Building DLST
Tram stop B or C « Gabriel Fauré »

NEW AND SECOND HAND BOOKS

Bookstores Arthaud and Decitre,
Grande rue
Bookstore Gibert, Boulevard Gambetta
Grenoble

WHERE TO EAT

Stendhal Cafeteria
Café Littéraire
Diderot restaurant
*Download the Izly app or get your Izly
card at the Diderot restaurant upon
presentation of your CUEF student card*

IF YOU NEED ANY HELP

on health, psychological
or social areas,
please make an appointment with
the campus health centre
180 rue de la Piscine
Tram B, stop « les taillées » - 0476824070
<https://centre-sante.univ-grenoble-alpes.fr/>

ENJOY YOUR STAY AT THE CUEF!