



# WELCOME TO THE CUEF! APRIL 2023

April 3<sup>rd</sup> to 28<sup>th</sup>

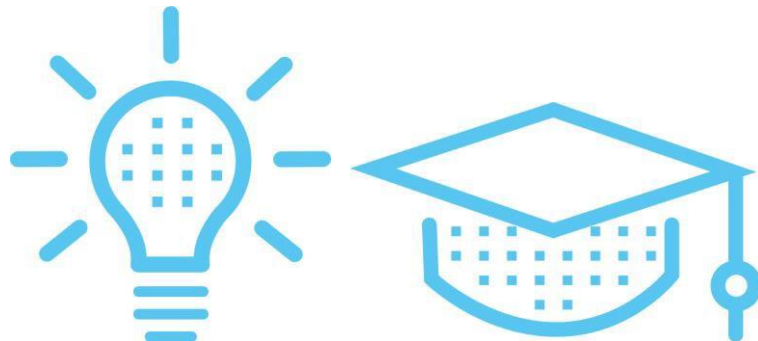
*No classes on Monday April 10<sup>th</sup>*

## CUEF Reception office (H014) Opening hours

Monday to Thursday:

8:15am to 12:45pm - 2 to 5:15pm

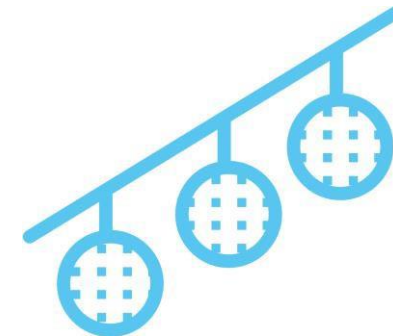
Friday - 8:15am to 12:45pm - 2 to 4pm



## ACCESS YOUR TIME SCHEDULES MAKE SURE YOU RECEIVED YOUR LOGIN

To access your time schedules for the coming weeks, starting on the evening of the 1<sup>st</sup> day of the session, have your Internet **login and password** ready (received by email) and go to:

- <https://leo.univ-grenoble-alpes.fr/>
- Click on « Mon emploi du temps »
- CUEF - COURS DE FRANÇAIS
- Click on the arrows "Etudiants" - « Campus Grenoble » - « CUEF » - « Cours mensuels »
- Click on the arrow corresponding to your type of course ("cours intensifs de langue française")
- Click on the arrow corresponding to the level of your group
- Click on your group
- Check the time schedule of your course session (week by week)



# WELCOME TO THE CUEF OF GRENOBLE - APRIL 2023


## COMPULSORY WELCOME MEETING

Room F004  
(Ground floor - Stendhal building F)

**10:30am:** presentations of the CUEF,  
activity program and BULLES library  
Campus Tour

## CULTURAL ACTIVITIES

Come to the **Foyer du CUEF** for  
information and advice on things to do  
during your stay.  
(H001 - in front of the cafeteria)

And don't forget to like our 

## GROUPS

on the CUEF board:  
Monday April 3<sup>rd</sup> at noon

Hall H, ground floor- Stendhal Building

## RESOURCE CENTRES

CUEF learner's library (BULLES)  
ground floor build. C  
Internet room: ground floor build. K



## CLASSES START

Monday April 3<sup>rd</sup>  
1 to 5pm

## COPIES AND PRINTING

Buy a card  
at the reprography department  
Building DLST  
Tram stop B or C « Gabriel Fauré »

## COURSE PAYMENT: deadline April 5<sup>th</sup>

CUEF reception Office  
H014

## NEW AND SECOND HAND BOOKS

Bookstores Arthaud and Decitre  
Grande rue  
Bookstore Gibert  
Boulevard Gambetta

## DEMATERIALIZED STUDENT CARD

Email us a picture  
we will email you your student card

## WHERE TO EAT

Stendhal Cafeteria (closed on week 1)  
Café Littéraire (closed on week 1)  
Diderot restaurant  
*Download the Izly app or get your Izly  
card at the Diderot restaurant upon  
presentation of your CUEF student card*

## LOGIN AND PASSWORD

To use on the Intranet,  
in the K Internet room  
and for the campus Wifi  
Received by email. If you have not  
received the link, please let us know

## IF YOU NEED ANY HELP

on health, psychological  
or social areas,  
please make an appointment with  
**the campus health centre**  
180 rue de la Piscine  
Tram B, stop « les taillées » - 0476824070  
<https://centre-sante.univ-grenoble-alpes.fr/>

## TIME SCHEDULE and UGA MAIL BOX

<https://leo.univ-grenoble-alpes.fr/>



**ENJOY YOUR STAY AT THE CUEF  
AND CONTACT US IF NEEDED!**