



Vivre le français
au cœur des Alpes

WELCOME TO THE CUEF! MAY 2024

April 29th to May 31st

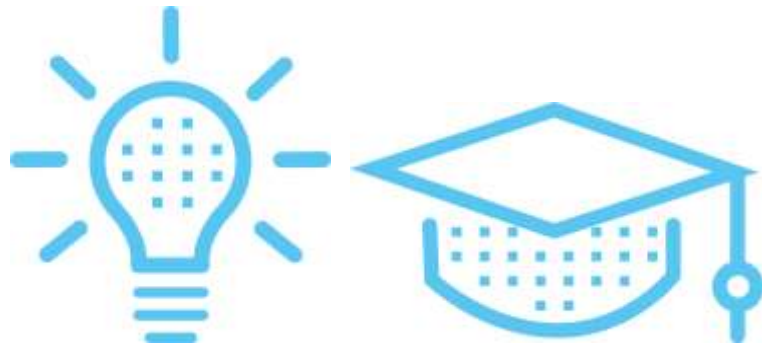
No classes on May 1st, 8th, 9th, 10th and 20th

CUEF Reception office (H014)
Opening hours

Monday to Thursday:

8:15am to 12:45pm - 2 to 5:15pm

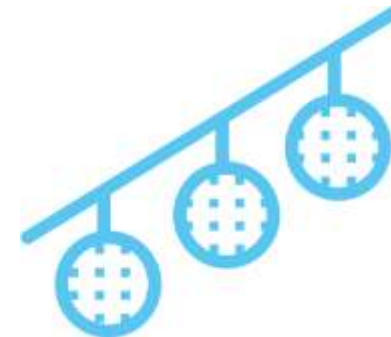
Friday - 8:15am to 12:45pm - 2 to 4pm



ACCESS YOUR TIME SCHEDULES MAKE SURE YOU RECEIVED YOUR LOGIN

To access your time schedules for the coming weeks, starting on the evening of the 1st day of the session, have your Internet **login** and **password** ready (received by email) and go to:

- <https://leo.univ-grenoble-alpes.fr/>
- Click on « Mon emploi du temps »
- CUEF - COURS DE FRANÇAIS
- Click on the arrows "Etudiants" - « Campus Grenoble » - « CUEF » - « Cours mensuels »
- Click on the arrow corresponding to your type of course ("cours intensifs de langue française")
- Click on the arrow corresponding to the level of your group
- Click on your group
- Check the time schedule of your course session (week by week)



WELCOME TO THE CUEF OF GRENOBLE - MAY 2024

COMPULSORY WELCOME MEETING

Monday April 29th - Room F003
Stendhal building
(ground floor - Hall F)

10am: presentations of the CUEF, the
UGA services and the BULLES library.
11am: campus tour.

GROUPS

on the CUEF board:
Monday April 29th at noon
Hall H, ground floor- Stendhal Building

CLASSES START

Monday April 29th
1 to 5pm
No classes on May 1st, 8th, 9th, 10th and 20th

COURSE PAYMENT: deadline May 2nd

840 euros
Office H014

DEMATERIALIZED STUDENT CARD

Email us your picture,
we will email you your student card

LOGIN AND PASSWORD

To use on the LEO Intranet,
in the Internet room
and for the campus Wifi
Received by email. If you have not
received the link, please let us know

TIME SCHEDULE and UGA MAIL BOX

<https://leo.univ-grenoble-alpes.fr/>

CULTURAL ACTIVITIES

<https://culture.univ-grenoble-alpes.fr/>

Many free activities for students
Come and chat in the **Foyer du CUEF**
(H001 - in front of the cafeteria)

And don't forget to like our



RESOURCE CENTRES

CUEF learner's library (BULLES)
ground floor build. C
Internet room: wing B, Michel
Dubois building



COPIES AND PRINTING

On line on LEO - Mes ressources -
reprographie, impression or
at the reprography department
Building DLST
Tram stop B or C « Gabriel Fauré »

NEW AND SECOND HAND BOOKS

Bookstores Arthaud and Decitre
Grande rue
Bookstore Gibert
Boulevard Gambetta

WHERE TO EAT

Stendhal Cafeteria
Café Littéraire
Diderot restaurant

*Create your account - Download the Izly
app or get your Izly card (3,30€) at the
Diderot restaurant upon presentation of
your CUEF student card*

IF YOU NEED ANY HELP

on health, psychological
or social areas,
please make an appointment with
the campus health center
MUSE - 80 Allée Ampère
Saint-Martin-d'Hères
Tram stop (B et C) Gabriel Fauré - Muse
<https://centre-sante.univ-grenoble-alpes.fr/>

**ENJOY YOUR STAY AT THE CUEF
AND CONTACT US IF NEEDED!**

