



Vivre le français
au cœur des Alpes

WELCOME TO THE CUEF! APRIL 2024

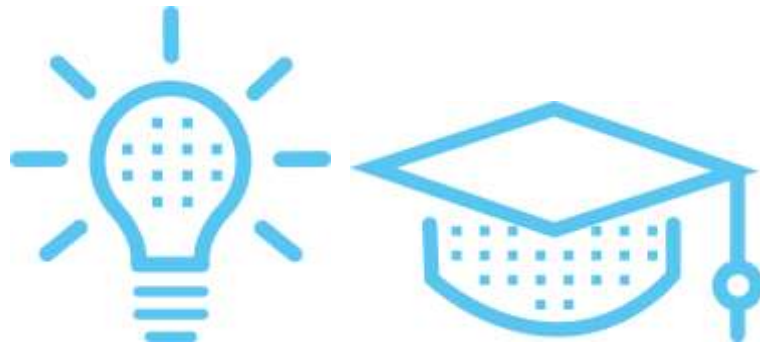
April 2nd to 26th

CUEF Reception office (H014)
Opening hours

Monday to Thursday:

8:15am to 12:45pm - 2 to 5:15pm

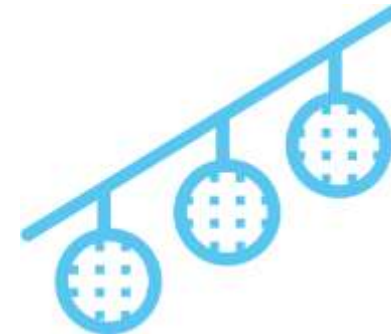
Friday - 8:15am to 12:45pm - 2 to 4pm



ACCESS YOUR TIME SCHEDULES MAKE SURE YOU RECEIVED YOUR LOGIN

To access your time schedules for the coming weeks, starting on the evening of the 1st day of the session, have your Internet **login** and **password** ready (received by email) and go to:

- <https://leo.univ-grenoble-alpes.fr/>
- Click on « Mon emploi du temps »
- CUEF - COURS DE FRANÇAIS
- Click on the arrows "Etudiants" - « Campus Grenoble » - « CUEF » - « Cours mensuels »
- Click on the arrow corresponding to your type of course ("cours intensifs de langue française")
- Click on the arrow corresponding to the level of your group
- Click on your group
- Check the time schedule of your course session (week by week)



WELCOME TO THE CUEF OF GRENOBLE - APRIL 2024

COMPULSORY WELCOME MEETING

Tuesday April 2nd - Room F003
Stendhal building
(ground floor - Hall F)

10am: presentations of the CUEF, activity
program
and BULLES library.
11am: campus tour.

GROUPS

on the CUEF board:
Tuesday April 2nd at noon
Hall H, ground floor- Stendhal Building

CLASSES START

Tuesday April 2nd
1 to 5pm

COURSE PAYMENT: deadline April 3rd

798 euros
Office H014

DEMATERIALIZED STUDENT CARD

Email us your picture,
we will email you your student card

LOGIN AND PASSWORD

To use on the LEO Intranet,
in the Internet room
and for the campus Wifi

Received by email. If you have not
received the link, please let us know

TIME SCHEDULE and UGA MAIL BOX

<https://leo.univ-grenoble-alpes.fr/>

CULTURAL ACTIVITIES

Come to the **Foyer du CUEF** for
information and advice on things to do
during your stay.

(H001 - in front of the cafeteria)

And don't forget to like our



RESOURCE CENTRES

CUEF learner's library (BULLES)
ground floor build. C
Internet room: wing B, Michel
Dubois building



COPIES AND PRINTING

On line on LEO - Mes ressources -
reprographie, impression or
at the reprography department
Building DLST
Tram stop B or C « Gabriel Fauré »

NEW AND SECOND HAND BOOKS

Bookstores Arthaud and Decitre
Grande rue
Bookstore Gibert
Boulevard Gambetta

WHERE TO EAT

Stendhal Cafeteria
Café Littéraire
Diderot restaurant

*Create your account - Download the Izly
app or get your Izly card (3,30€) at the
Diderot restaurant upon presentation of
your CUEF student card*

IF YOU NEED ANY HELP

on health, psychological
or social areas,
please make an appointment with
the campus health center

MUSE - 80 Allée Ampère
Saint-Martin-d'Hères
Tram stop (B et C) Gabriel Fauré - Muse
<https://centre-sante.univ-grenoble-alpes.fr/>



**ENJOY YOUR STAY AT THE CUEF
AND CONTACT US IF NEEDED!**